



Instructions

HD MASS CONNECTOR

Thank you for purchasing from AAL! We greatly appreciate your trust in our company. We take that purchase and your commitment to us very seriously. If you have any questions along the way, please don't hesitate to give us a call at 385.202.4188.

Please read the instructions thoroughly before starting this project.

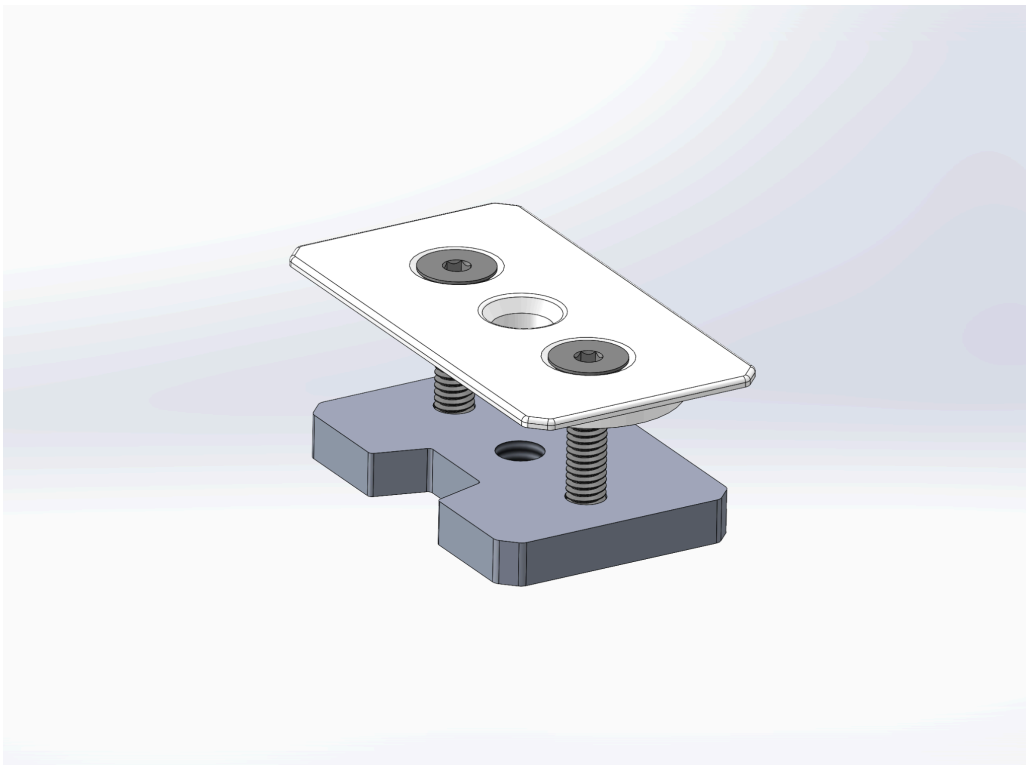
Tools Required:

- 2.5mm allen wrench

Step 1: Pre-Assemble Connector

Using the longer pair of bolts, assemble the connector as shown in diagram 1. The bolts should thread about half way through the metal plate. If you thread them too far into the metal plate, the connectors will not install properly during the next step.

Diagram 1



Step 2 - Insert into Platform

IMPORTANT - Make sure to lay out on your platform the accessory i.e. drawer, fridge slide beforehand so you know where to put your HD MASS Connectors.

Insert the assembled connector into the platform (or other accessory). Be sure to insert the straight side (without the notch) first, as shown in diagram 2. After inserting the plate into the platform, lay it flat on the platform as shown in diagram 3.

Diagram 2

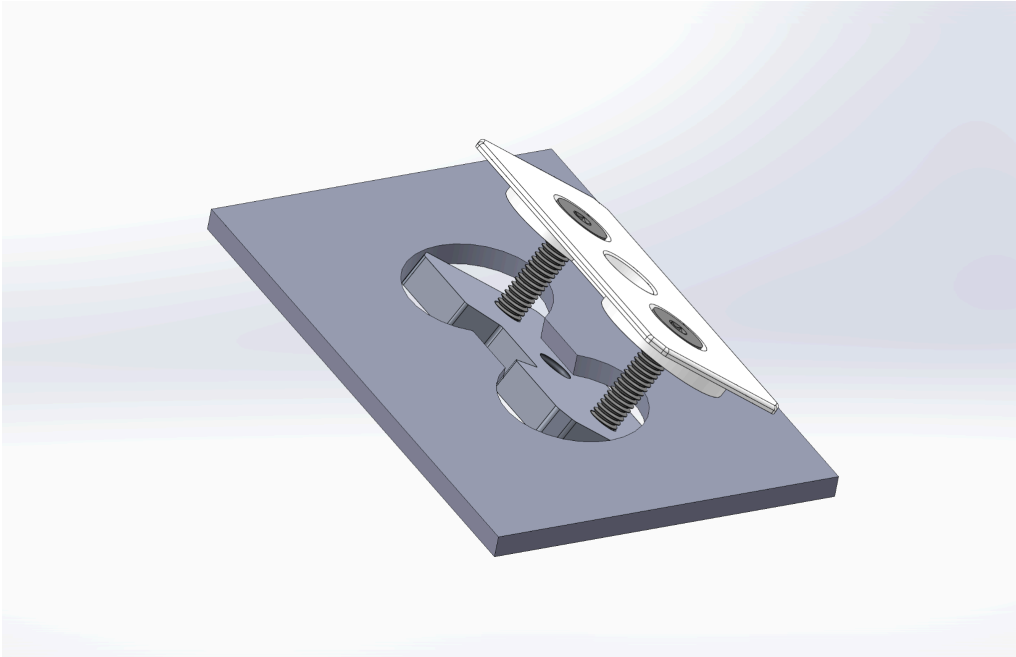
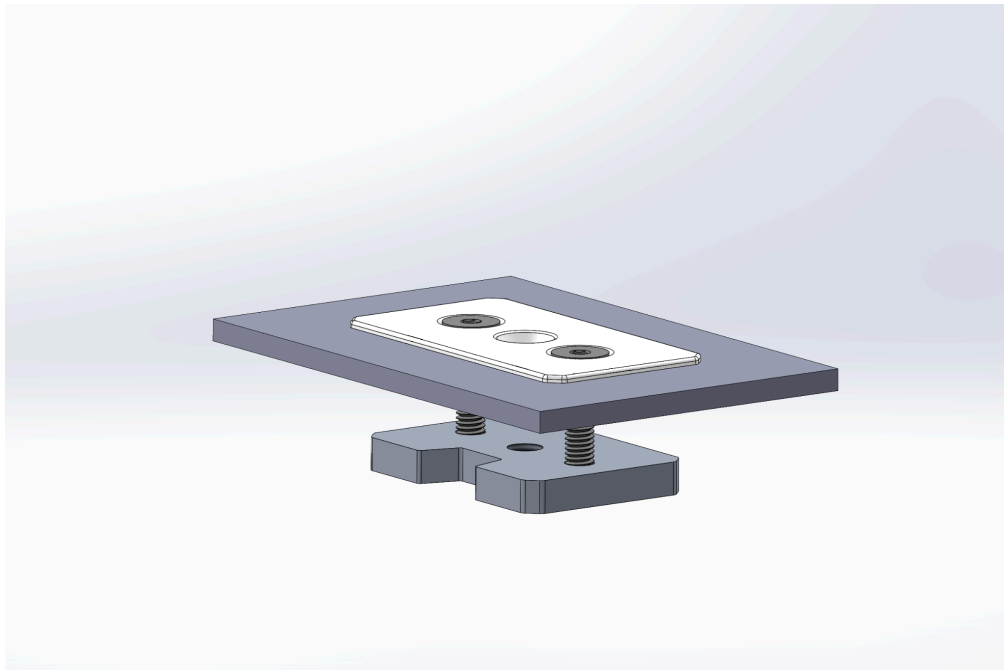


Diagram 3



Step 3 - Tighten Bolts

Using the 2.5mm allen wrench, tighten one of the bolts fully (diagram 4). **Do not tighten past the point of flexing the top plastic pad.** These do not have to be very tight. They just need to pull the bottom plate up against the bottom side of the platform. After the first bolt is tightened, tighten the second bolt (diagram 4).

Diagram 4

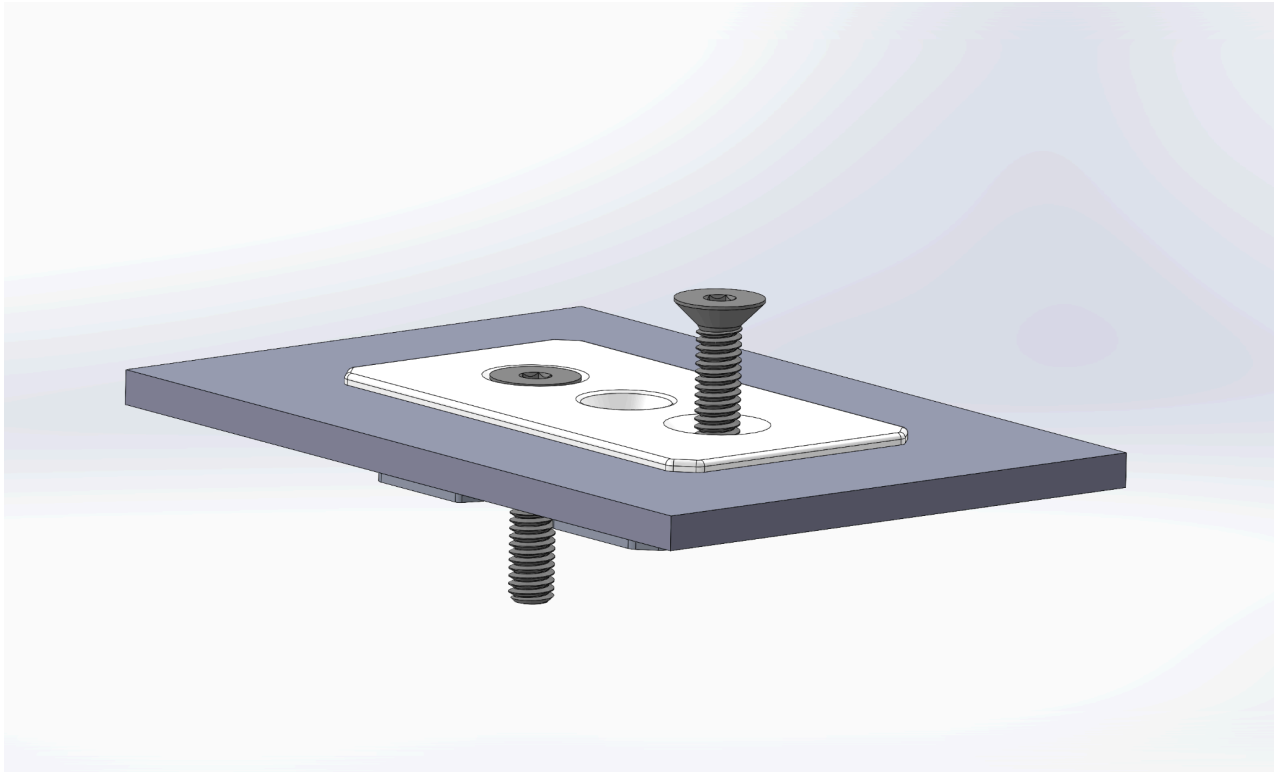
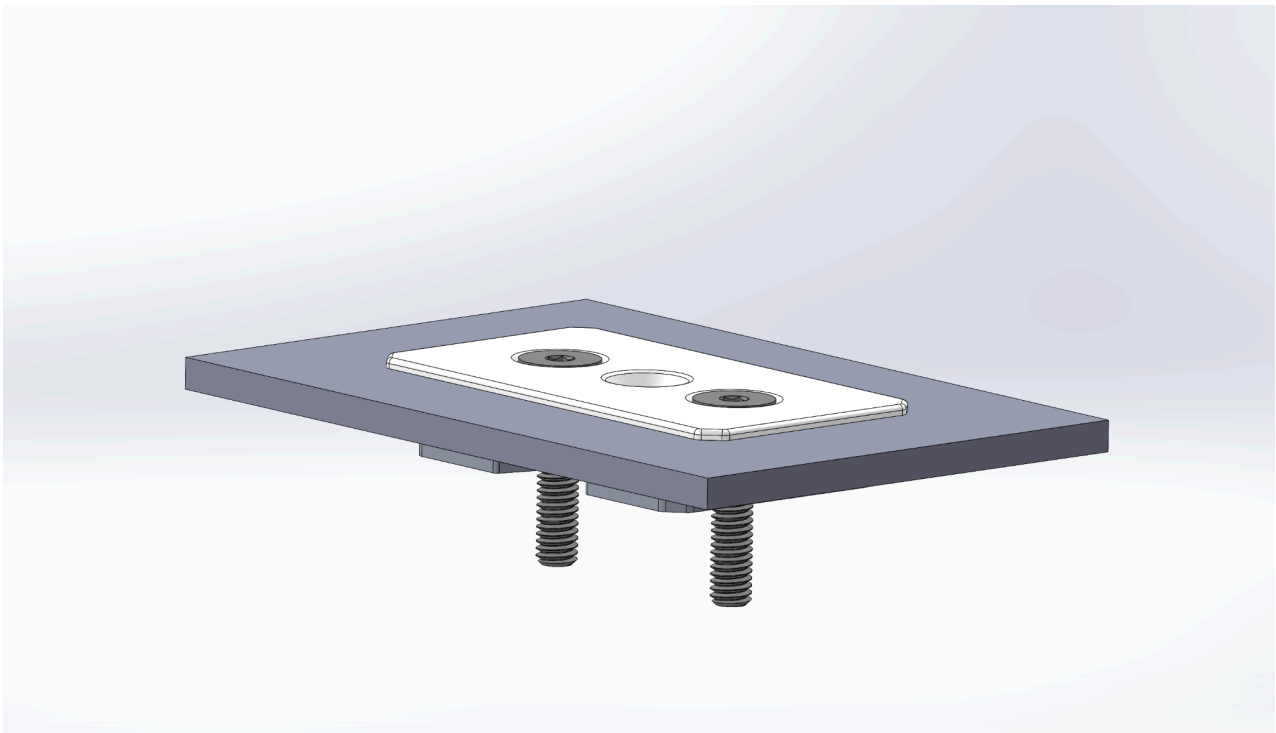


Diagram 4



Step 4 - (Optional) - Replace Long Bolts

If you are installing the connector in a position where there is not much room below the bottom of the installed connector, you can swap out the long bolts with the shorter bolts provided. This will provide a clear pathway below the connector.

Step 5 - Install Accessory (Drawer, Slide, etc.)

At this point, the connector is fully installed. The accessory can be installed on top of the connector. Then, insert the installation bolt through the accessory (drawer, slider, etc.).

Step 6: Share Your Photos

We take great pride in building our products and we hope that pride extends to you after installing them. If you are able to share your photos online (Facebook and Instagram), please tag **@AmericanAdventureLab** in the photo. We would love to see how it turned out and give you some reciprocal attention in return.

Congrats! You're all done!

Thank you!

At American Adventure Lab, we strive to improve anywhere we can. If you experience any issues with this product or have any suggestions, please let us know.

If you have any questions or concerns, please don't hesitate to reach out to us at 385.202.4188 or via email at Sales@AmericanAdventureLab.com.

